



## >> Type of use (\*)

Protection against cold and foul weather. (\*\*) Industry. Agriculture. Public works sector. Receiving, warehousing processes. Maintenance of parks and gardens. Building and construction. Fork-lift drivers. Artisans...

## >> Technical features

- ✓ Warm multi-pocket bodywarmer with loins protection.
- ✓ Outshell : Rip-stop polyester with PVC coating.
- ✓ Lining: polyester Polar fleece. Padding: polyester.
- ✓ Front zipper closing. 2 front slant pockets with flap. 2 breast pockets with zip. 3 pen holders. 1 mobile phone pocket with flap. 1 inside pocket with zip.
- ✓ Point collar.
- ✓ Elasticated on both sides.
- ✓ Reflective piping. Multi-use keyholder.
- ✓ Features a zip access for print.
- ✓ **Colour:** grey/black.
- ✓ **Sizes and packings:**

|        | M, L, XL, 2XL | S, 3XL  |  |
|--------|---------------|---------|--|
| Carton | 10 units      | 5 units |  |
| Bundle | 1 unit        | 1 unit  |  |

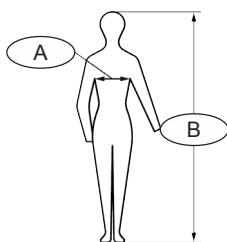
Learn more: [www.singer.fr](http://www.singer.fr)



## >> Advantages

- ✓ Softness and resistance of the Ripstop fabric.
- ✓ Very warm: both Polar lined for smooth comfort and polyester lined for high insulation! With loins protection.
- ✓ Snug Polar fleece collar.
- ✓ Many accessories are making this product very practical.
- ✓ Trendy and dynamic cut design.

| size | Chest (cm) (A) | Height (cm) (B) |
|------|----------------|-----------------|
| S    | 84-96          | 160-172         |
| M    | 92-104         | 166-178         |
| L    | 100-112        | 172-184         |
| XL   | 108-120        | 180-192         |
| 2XL  | 116-128        | 188-198         |
| 3XL  | 126-138        | 192-202         |



## >> Conformity

This model complies with **European Regulation (EU) 2016/425** on Personal Protective Equipment (PPE).

**Category I item.**

**Regulation (EU) 2016/425 (\*\*).**

The PPE is subject to the conformity assessment procedure based on internal production control (**module A**) set out in Annex IV (**Minor risks**).

Download the EU declaration of conformity on: <http://docs.singer.fr>

(\*\*) ANNEX I, Category I, e) : Atmospheric conditions that are not of an extreme nature.

Your distributor **SINGER® SAFETY**

**SINGER®**  
safety